

Commitment to "Quality Education" through 100SEED



November 30, 2023
Sumitomo Corporation



Sumitomo Corporation

| Enriching lives and the world

Contents

- 1. About Sumitomo Corporation Group**
- 2. What is 100SEED**
- 3. Our Pro Bono Activities**
- 4. Outcome and Future**

About Sumitomo Corporation Group

A global conglomerate with 886 companies in 78 countries, supporting every aspect of our lives.



**Number of
Employees**
(consolidated basis)
78,235 people

**Number of
offices**
129 locations

**Number of group
companies**
886 companies

Net Income
565 billion yen

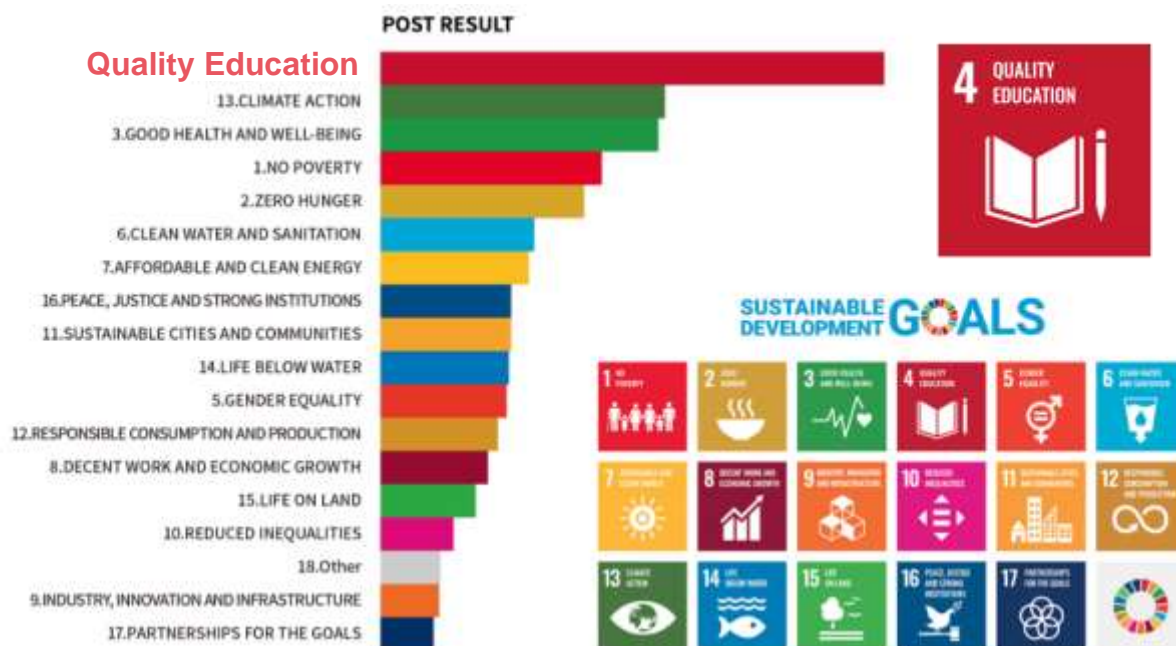
**Shareholders'
Equity**
3.8 trillion yen

(As of 2023/3/31)

What is 100SEED

Social Contribution Activity Program initiated by the project team, formed on the occasion of **our 100th anniversary** in 2019.

“Let’s think about our Society 100 years from now;
Not only about our Company itself!”



さあ、私たち一人ひとりが創る、次の100年
Each step creates our next 100 years



What is 100SEED

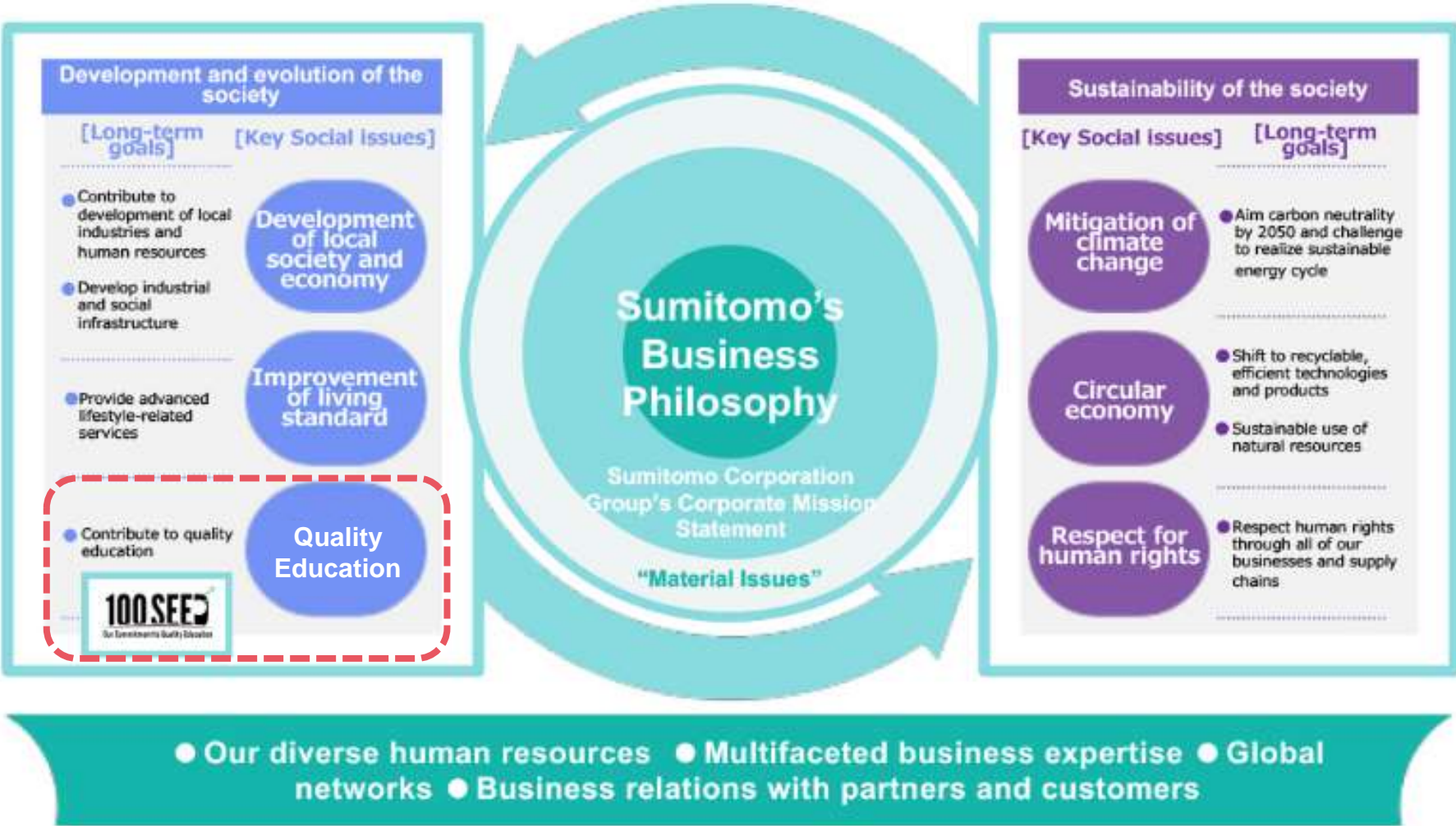
**Social Contribution Activity Program that works to solve educational issues in each region.
Sumitomo Corporation Group employees engage this program through participation at each site.**



100SEEDは、世界各地の住友商事グループ社員が、自ら対話し、積極的に参加することで、それぞれの地域社会の教育課題の解決に取り組む社会貢献活動プログラムです。

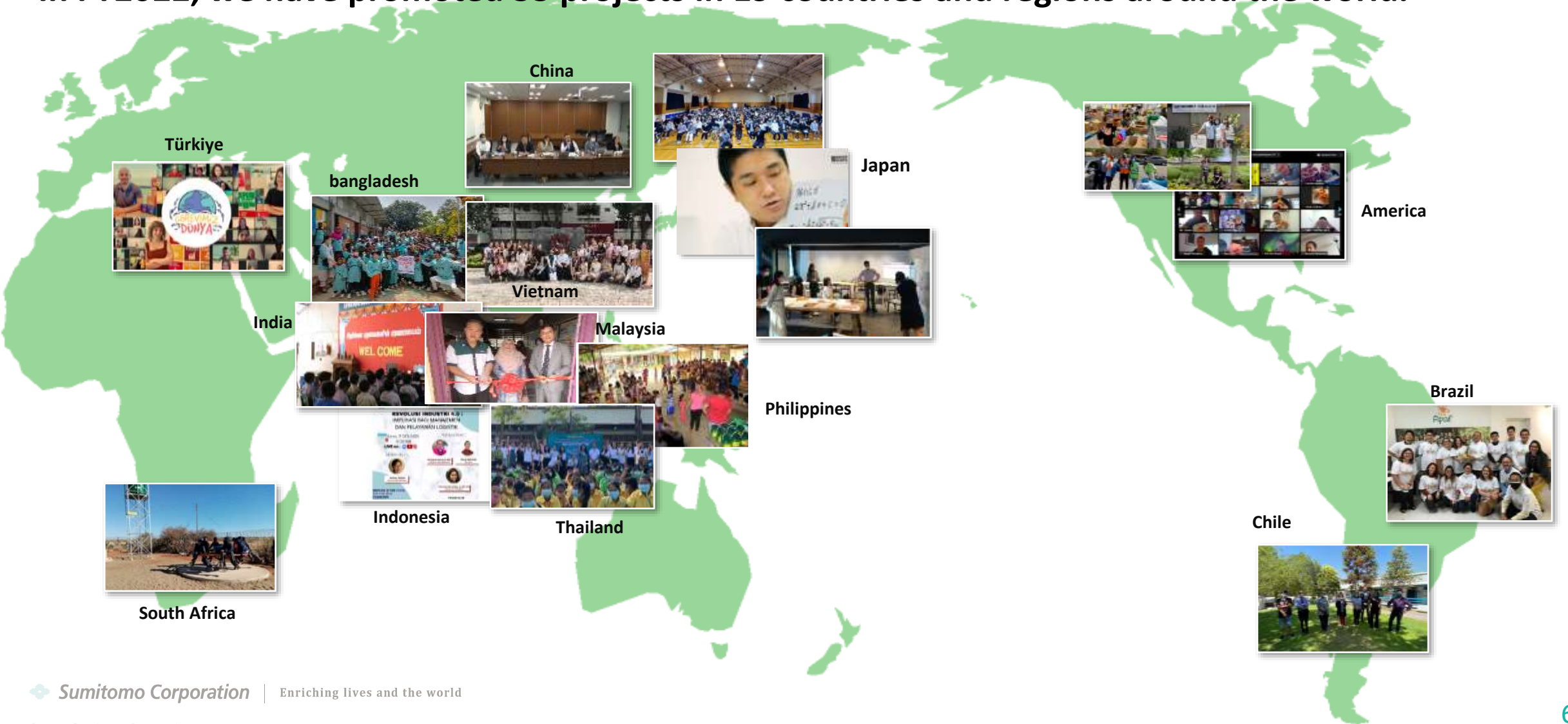
Positioning in Sustainability Management

We have selected “Quality Education” as one of the six key social issues.



100SEED: Our Global Social Contribution Activity Program

In FY2022, we have promoted 53 projects in 19 countries and regions around the world.



100SEED Activities in Japan (FY2020-23)

In Japan, a total of 789 employees have engaged in three activities for educational issues.

Pro Bono Educational support



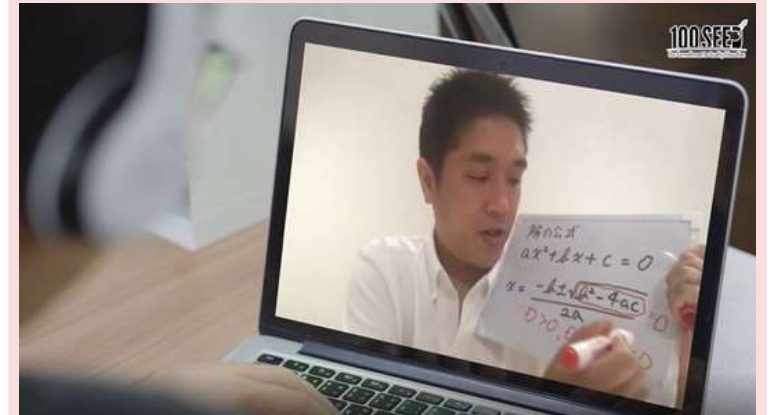
241 employees support
34 organizations

Career Education Support “Mirai School”



268 employees support
15,500 students in 91
high schools

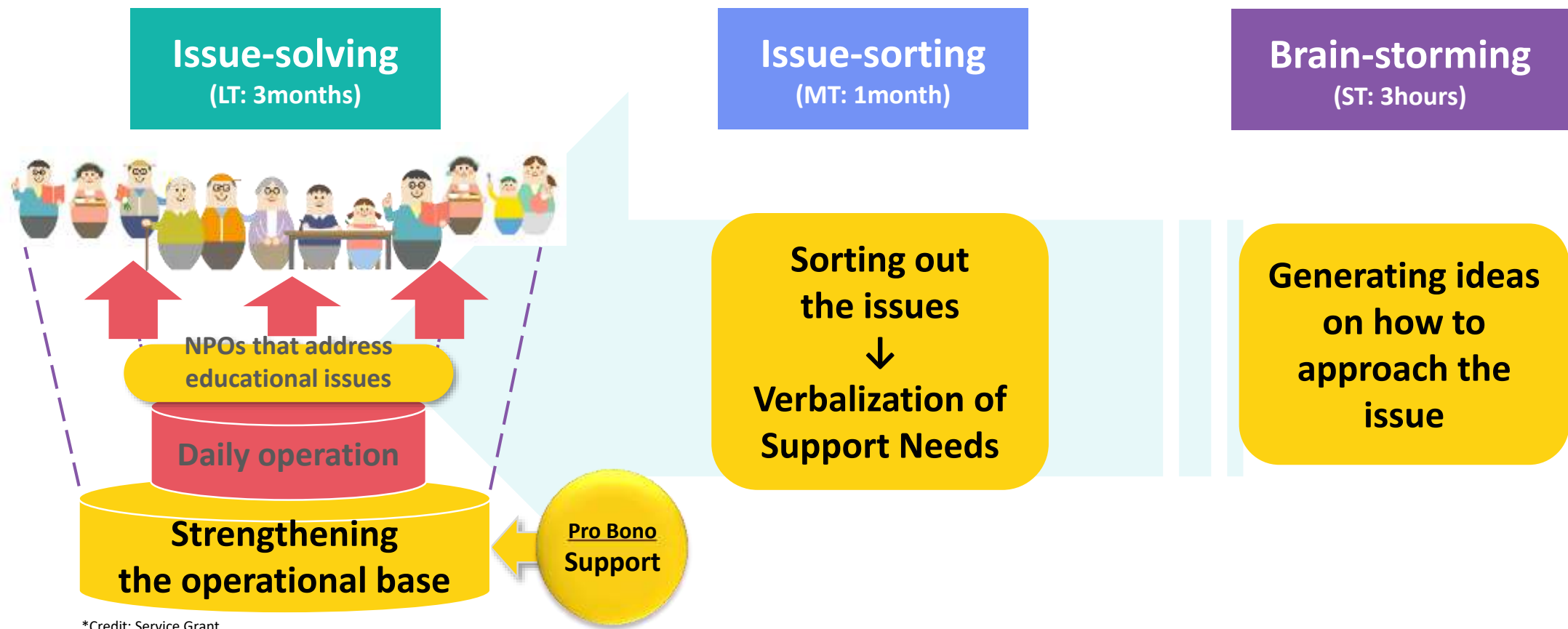
Educational Support for Multi-cultural Society



280 employees support
children with foreign roots

Pro Bono Educational Support: 3 approaches (FY2020-23)

Utilizing the skills and experience gained through work, we support the strengthening of the operational foundations of NPOs that address educational issues.



*Credit: Service Grant

Pro Bono Educational Support: NPOs to support (FY2020-23)

We have supported 34 organizations working on various educational issues.

FY2020



ハナラボ



I am OKの会



アルバ・エデュ

FY2021



dattochi home



体験型安全教育支援機構



HUG for ALL

FY2022



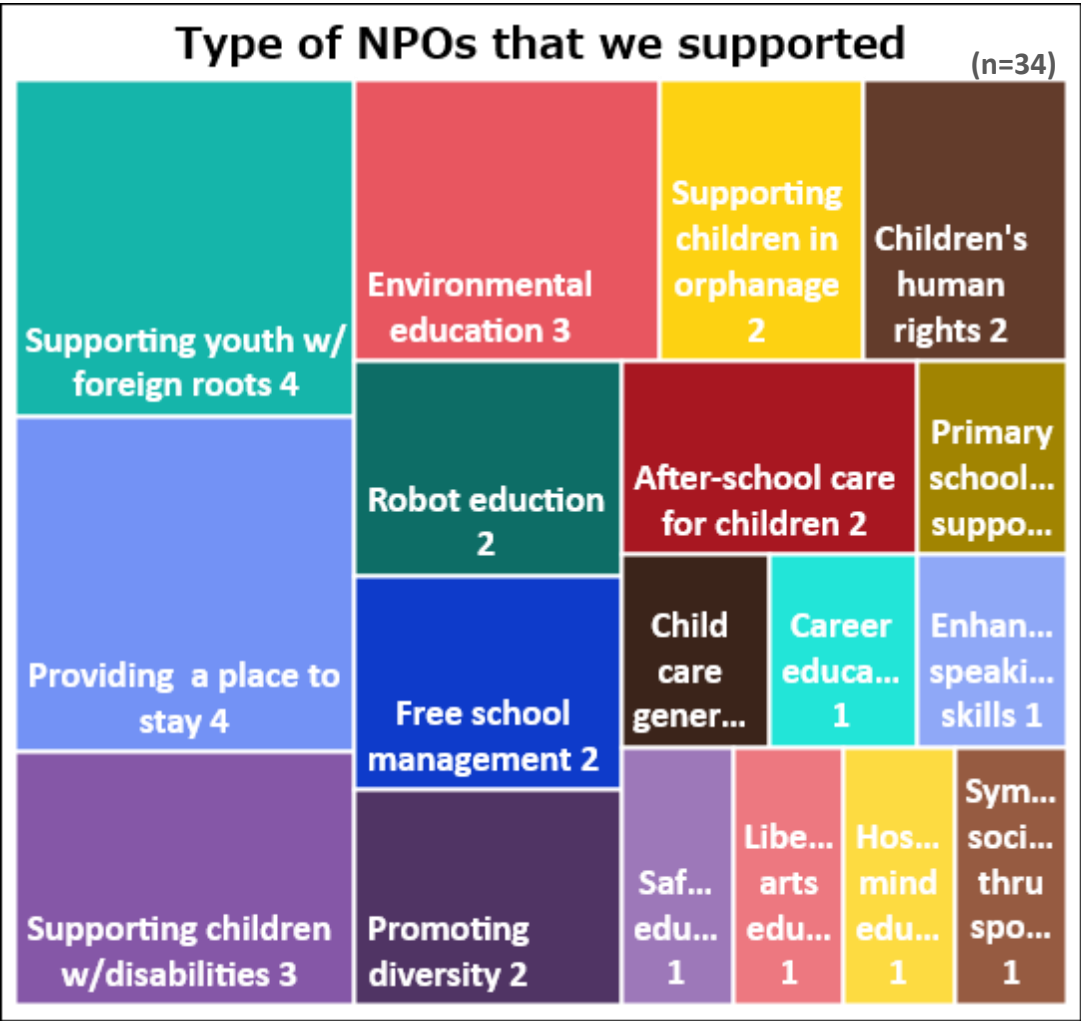
コラボライフ



UMEプロジェクト



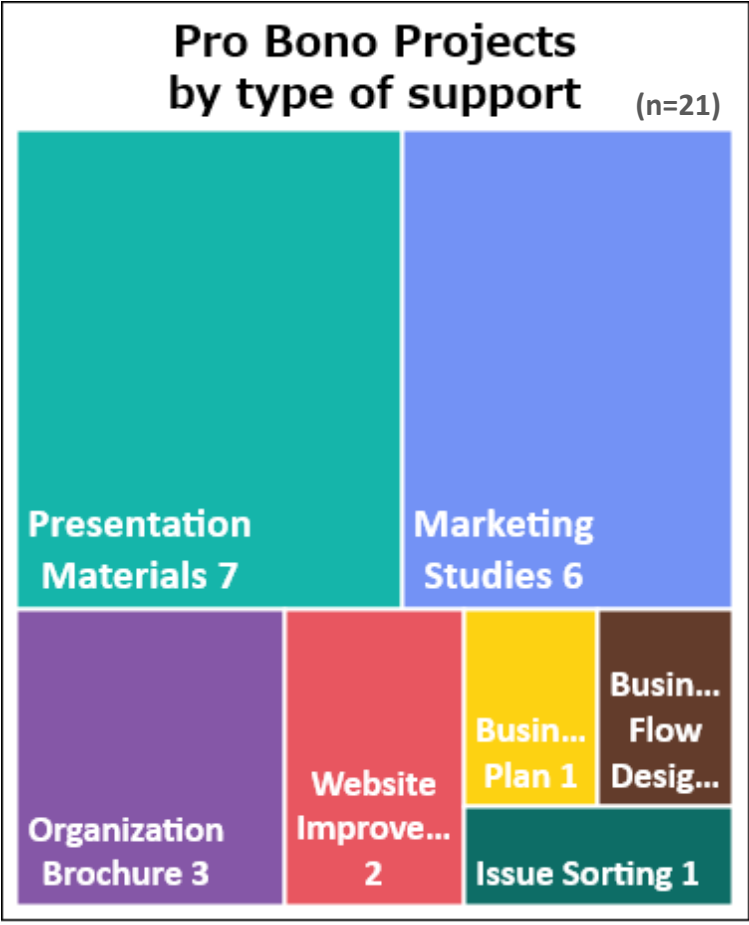
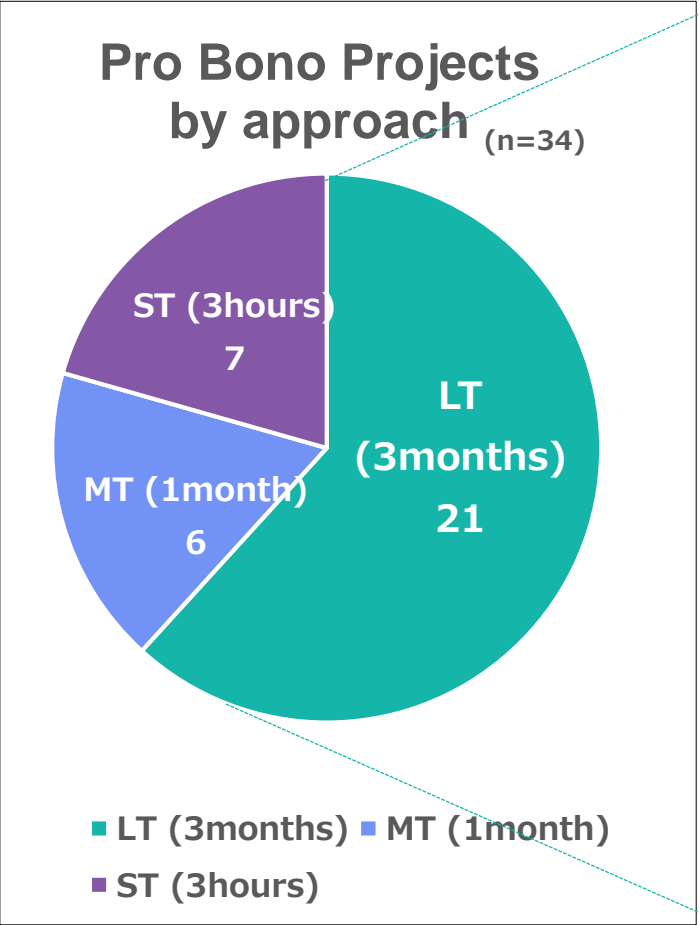
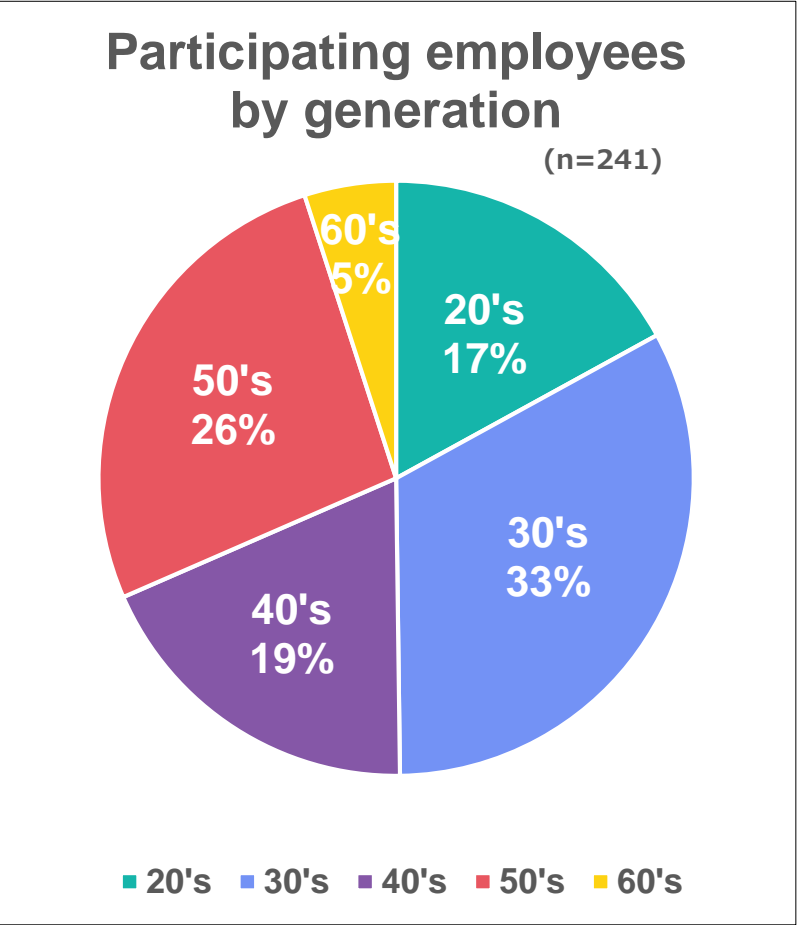
Nancy



Pro Bono Educational Support: Results (FY2020-23)

A total of 241 employees support 34 organizations working on educational issues.

(As of 2023/11/30)

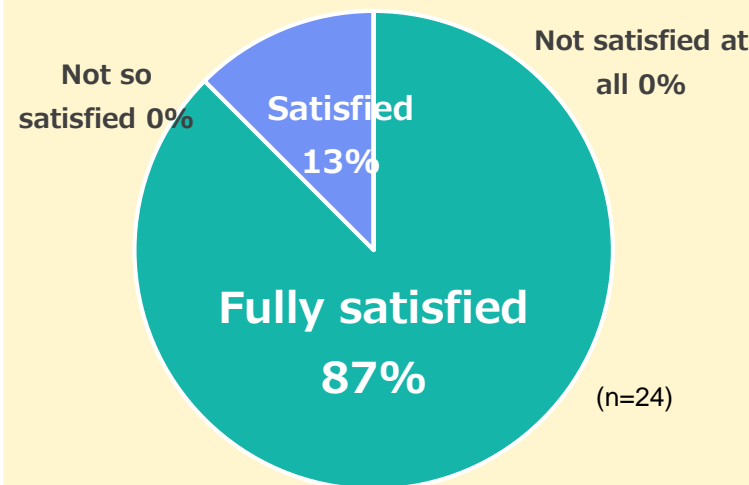


Pro Bono Educational Support: Outcome (FY2020-23)

Good feedbacks from both NPOs and participating employees.

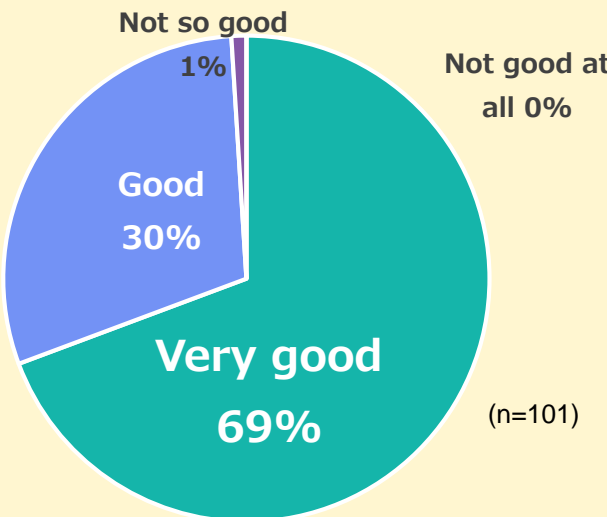
■ **NPOs:**

How was the Support?



■ **Employees:**

How was Pro Bono?



Voices from NPOs

- ✓ Received **concrete, realistic and exciting proposal** from Pro Bono team.
- ✓ We could **come up with a clear vision** after a series of discussion and their professional fine tunings.
- ✓ We could **realize our strengths and how to appeal those to the outside.**

Voices from Employees

- ✓ **Realized the value of teamwork.** Got new perspectives by collaborating with others and listening different views.
- ✓ Brought me the opportunities of meeting new people, learning new things, and **realizing a fruitful life.**
- ✓ **Felt fulfillment and joy of being help of others** when the NPO was happy with our support. Began to think about how to help others in my daily life.

